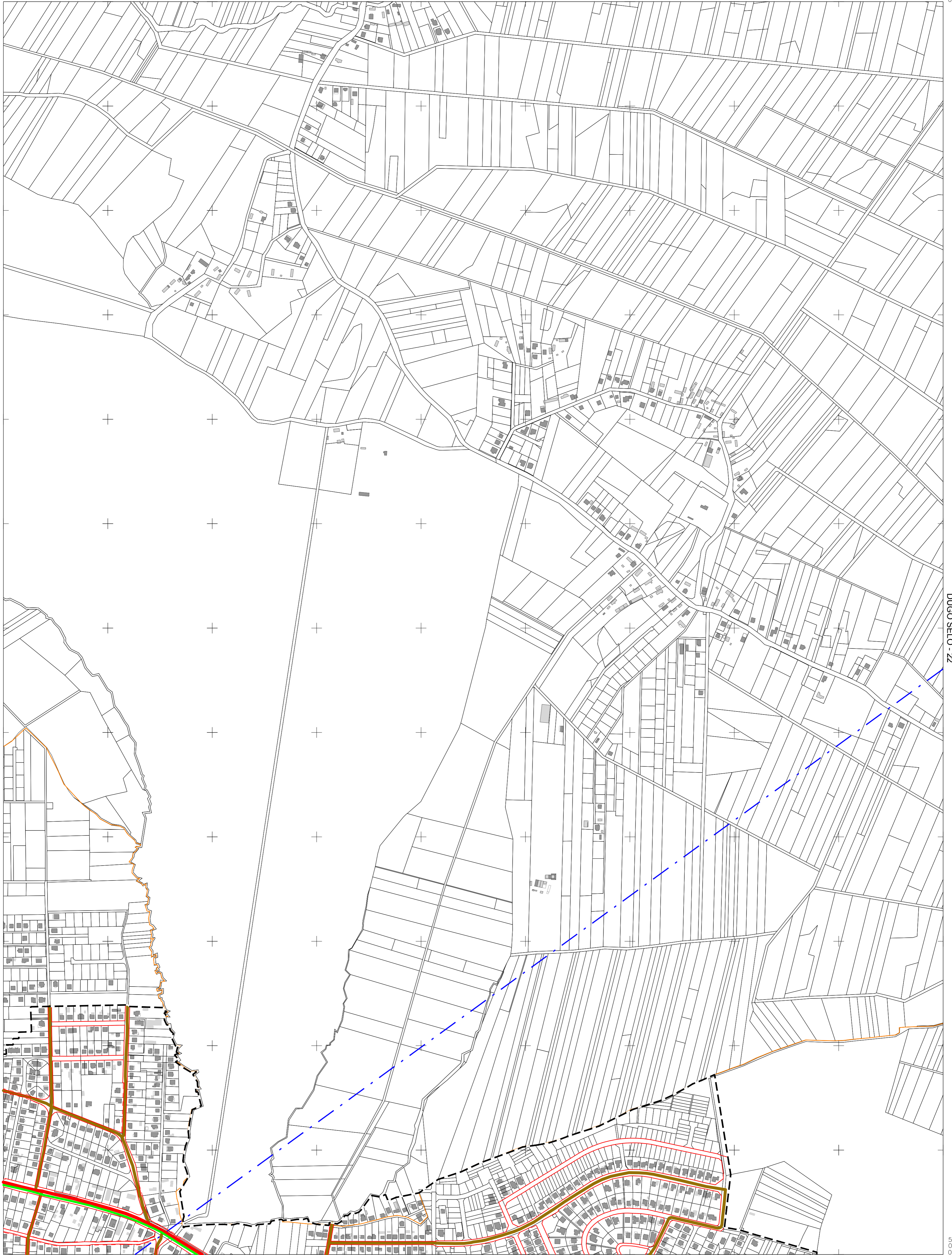


DUGO SELO - 11



ZAGREB - 30

DUGO SELO - 22

DUGO SELO - 31

5 076 000

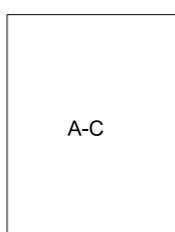
5 076 000

KATASTARSKE OPĆINE:

- A - Šašincev
- B - Sessvetski Kraljevec

IZMJERA:

- A - tahimetrija, ortogonal
- B - fotogrametrija
- C - komasacija
- D - grafička

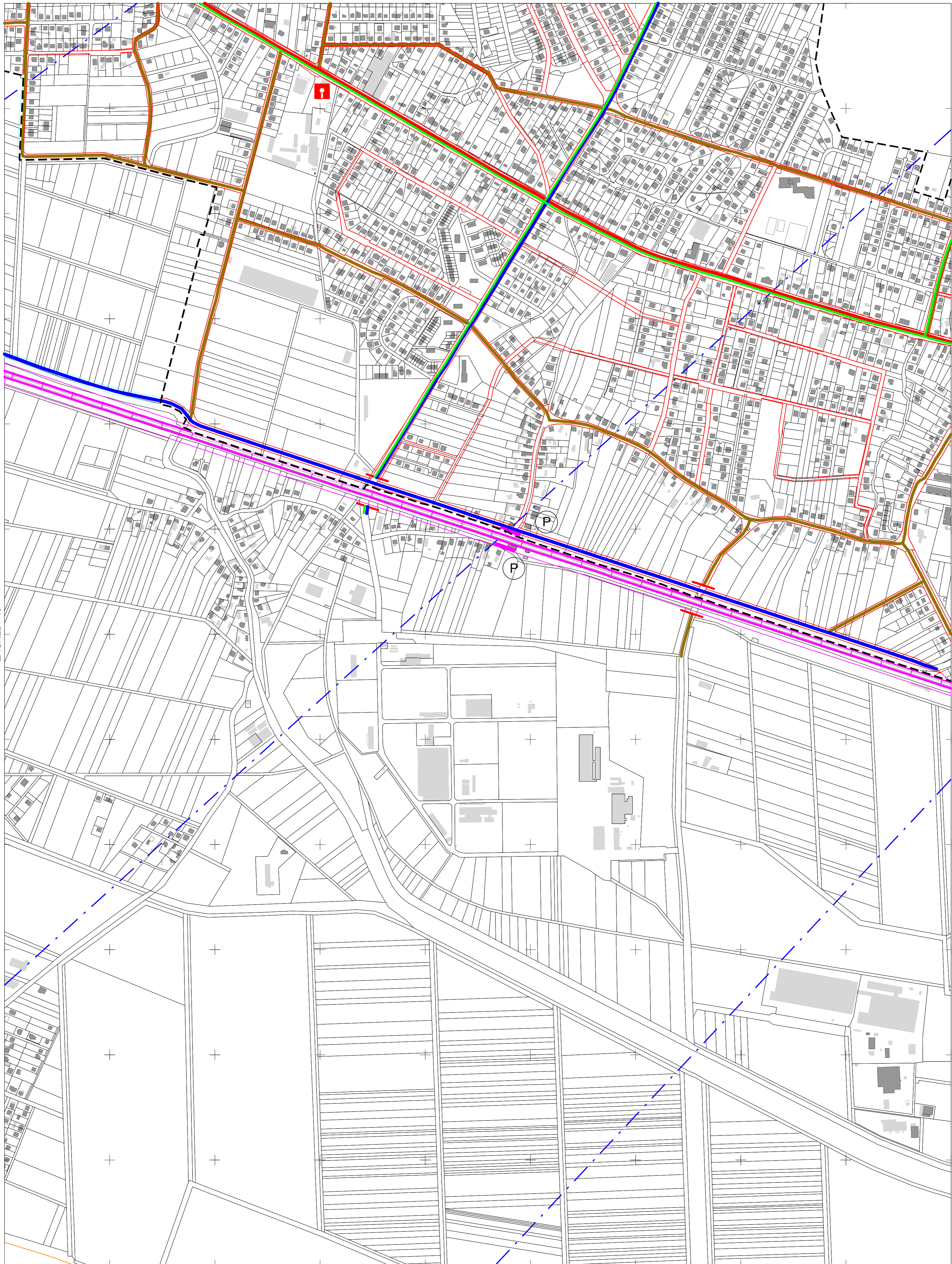


MJERILO 1:5000

Izrada: Gradski ured za katastar i geodetske poslove Grada Zagreba  
prosinac 2013.



DUGO SELO - 21



ZAGREB - 40

DUGO SELO - 32

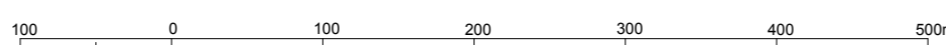
DUGO SELO - 41

000 065 5

5 073 000 592 250

KATASTARSKE OPĆINE:  
A - Sessvetski Kraljevec

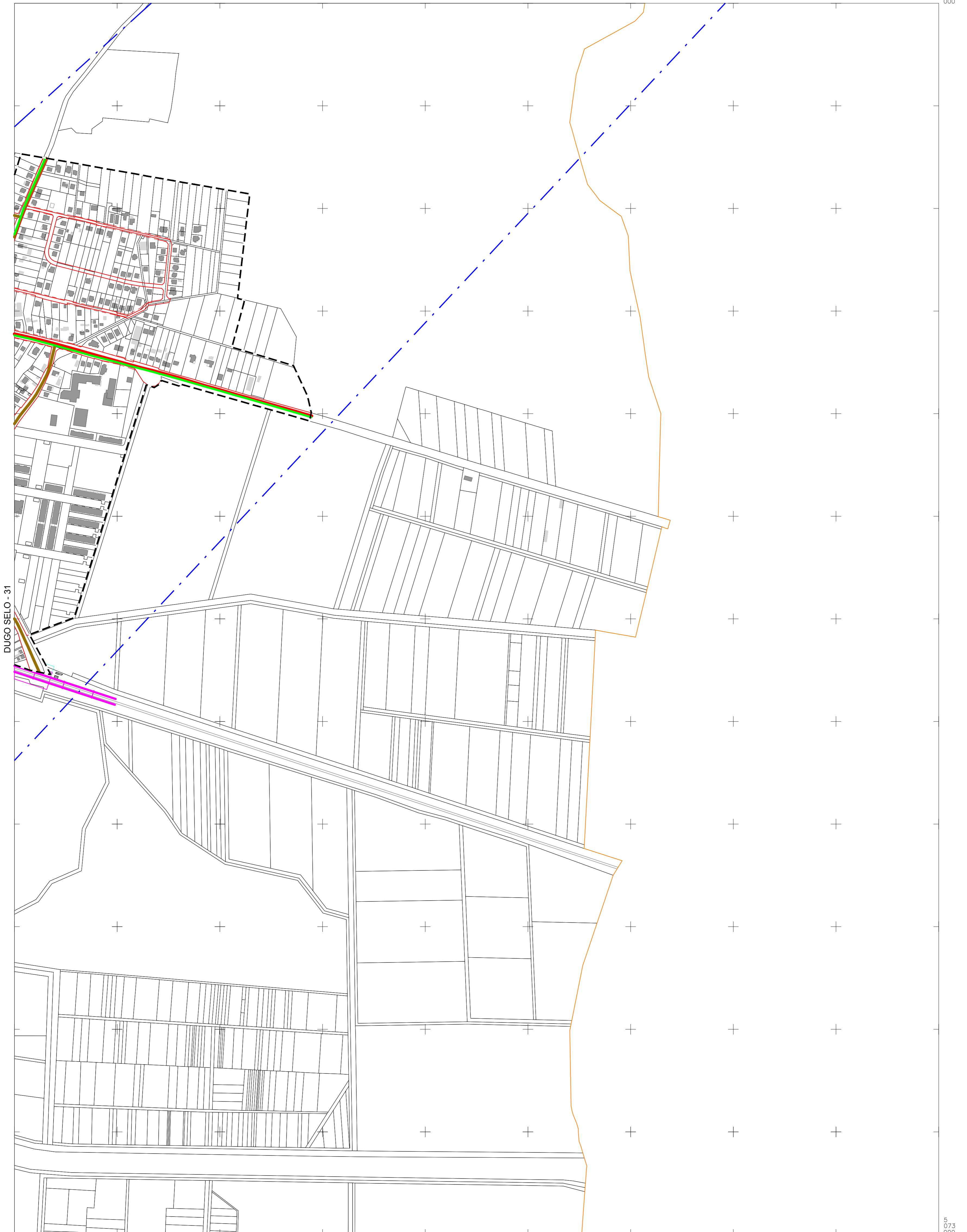
IZMJERA:  
A - tahimetrija, ortogonal  
B - fotogrametrija  
C - komasacija  
D - grafička



MJERILO 1:5000

Izrada: Gradski ured za katastar i geodetske poslove Grada Zagreba  
prosinac 2013.





DUGO SELO - 31

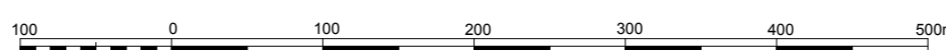
DUGO SELO - 42

5  
26  
22

5  
073  
000

KATASTARSKE OPĆINE:  
A - Sesvetski Kraljevec

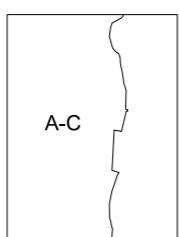
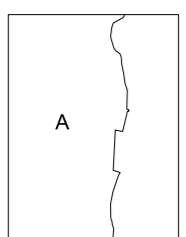
IZMJERA:  
A - tahimetrija, ortogonal  
B - fotogrametrija  
C - komasacija  
D - grafička



MJERILO 1:5000

Izradba: Gradski ured za katastar i geodetske poslove Grada Zagreba  
prosinac 2013.

DUGO SELO - 32







ZAGREB - 27

ZAGREB - 29

ZAGREB - 38

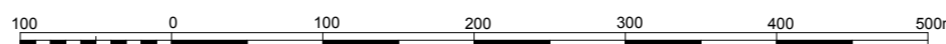
Izrada: Gradski ured za katastar i geodetske poslove Grada Zagreba  
prosinac 2013.

KATASTARSKE OPĆINE:

- A - Granešina
- B - Dubrava
- C - Sesvete
- D - Resnik

IZMJERA:

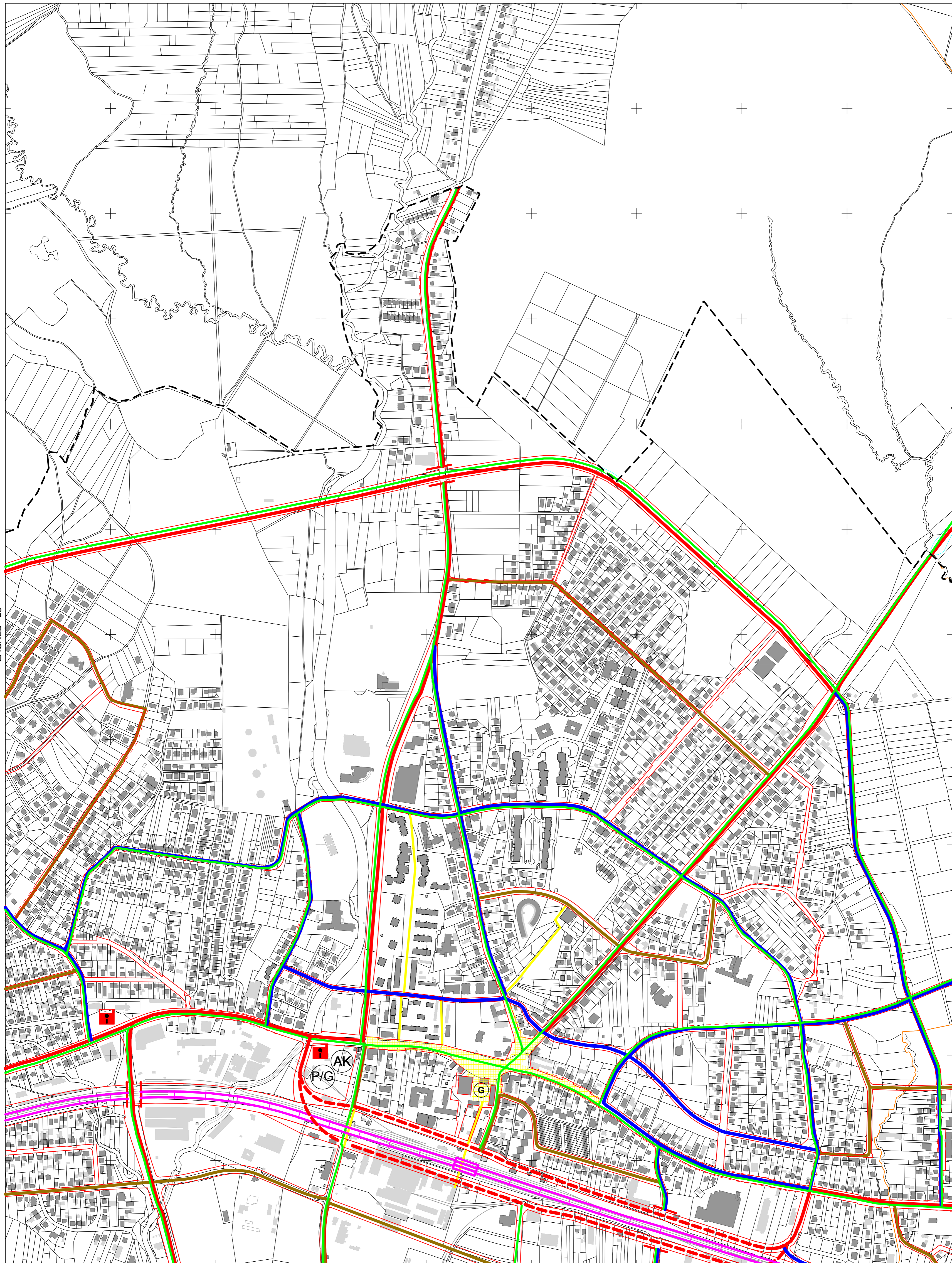
- A - tahimetrija, ortogonal
- B - fotogrametrija
- C - komasacija
- D - grafička



MJERILO 1:5000



ZAGREB - 19



ZAGREB - 28

ZAGREB - 30

ZAGREB - 39

005  
585  
5

5 076  
000  
587  
750

Izrada: Gradski ured za katastar i geodetske poslove Grada Zagreba  
prosinac 2013.

**KATASTARSKE OPĆINE:**

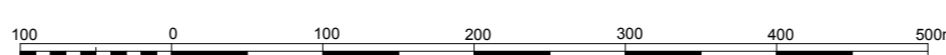
A	B	C

A - Seвете  
B - Đurđekovec  
B - Sesvetski Kraljevec

**IZMJERA:**

A-B

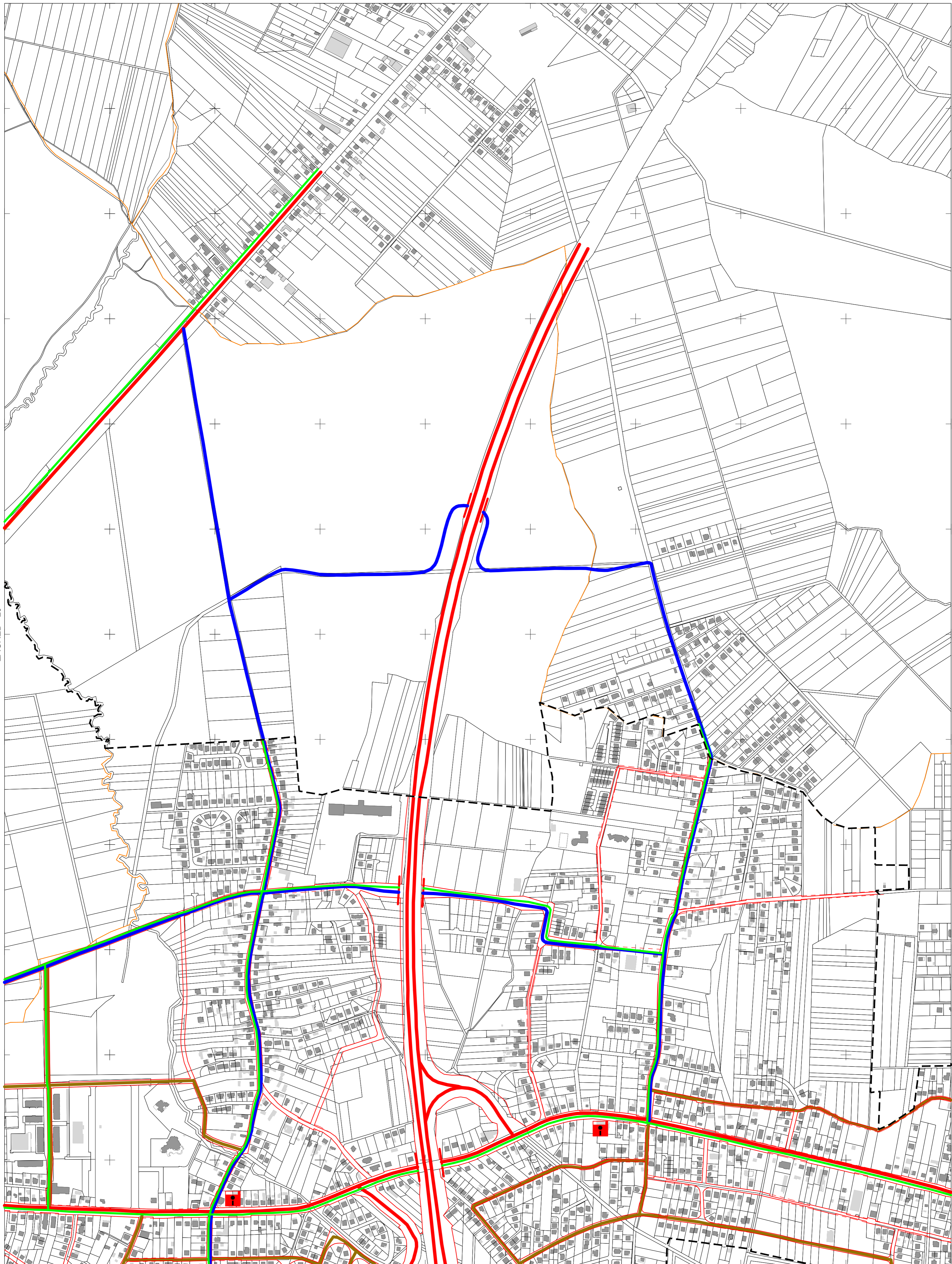
A - tahimetrija, ortogonal  
B - fotogrametrija  
C - komasacija  
D - grafička



MJERILO 1:5000



ZAGREB - 20



ZAGREB - 29

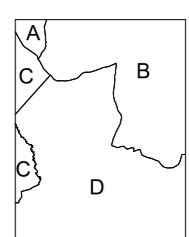
DUGO SELO - 21

ZAGREB - 40

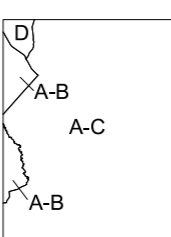
5  
076  
000

5  
590  
000

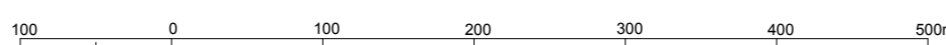
Izrada: Gradski ured za katastar i geodetske poslove Grada Zagreba  
prosinac 2013.



KATASTARSKE OPĆINE:  
 A - Durdekovec  
 B - Sašinec  
 C - Sesvete  
 D - Sesvetski Kraljevec



IZMJERA:  
 A - tahimetrija, ortogonal  
 B - fotogrametrija  
 C - komasacija  
 D - grafička



MJERILO 1:5000

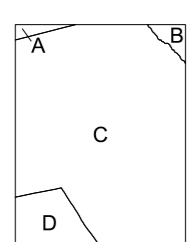




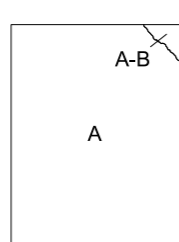
ZAGREB - 37

ZAGREB - 39

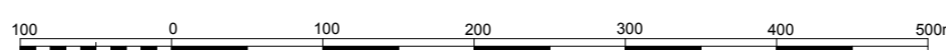
ZAGREB - 48



KATASTARSKE OPĆINE:  
 A - Dubrava  
 B - Sesvete  
 C - Resnik  
 D - Žitnjak



IZMJERA:  
 A - tahimetrija, ortogonal  
 B - fotogrametrija  
 C - komasacija  
 D - grafička



MJERILO 1:5000

Izrada: Gradski ured za katastar i geodetske poslove Grada Zagreba  
 prosinac 2013.

5 073 000



ZAGREB - 29

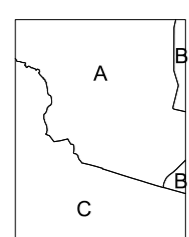
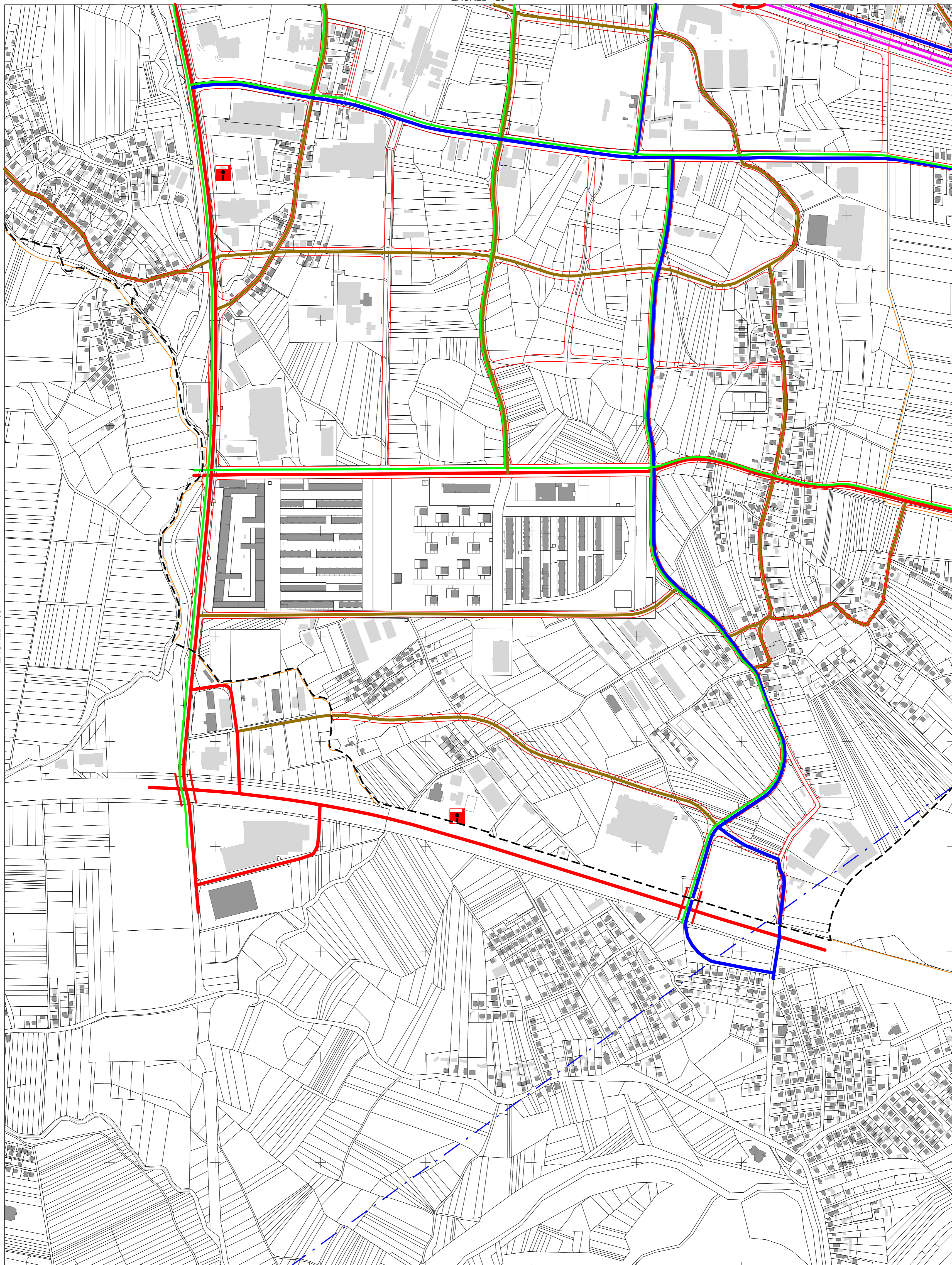
ZAGREB - 38

ZAGREB - 40

ZAGREB - 49

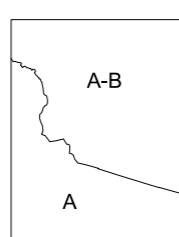
5  
073  
000  
587  
750

Izrada: Gradski ured za katastar i geodetske poslove Grada Zagreba  
prosinac 2013.



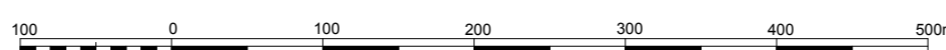
KATASTARSKE OPĆINE:

- A - Sesvete
- B - Sesvetski Kraljevec
- C - Resnik



IZMJERA:

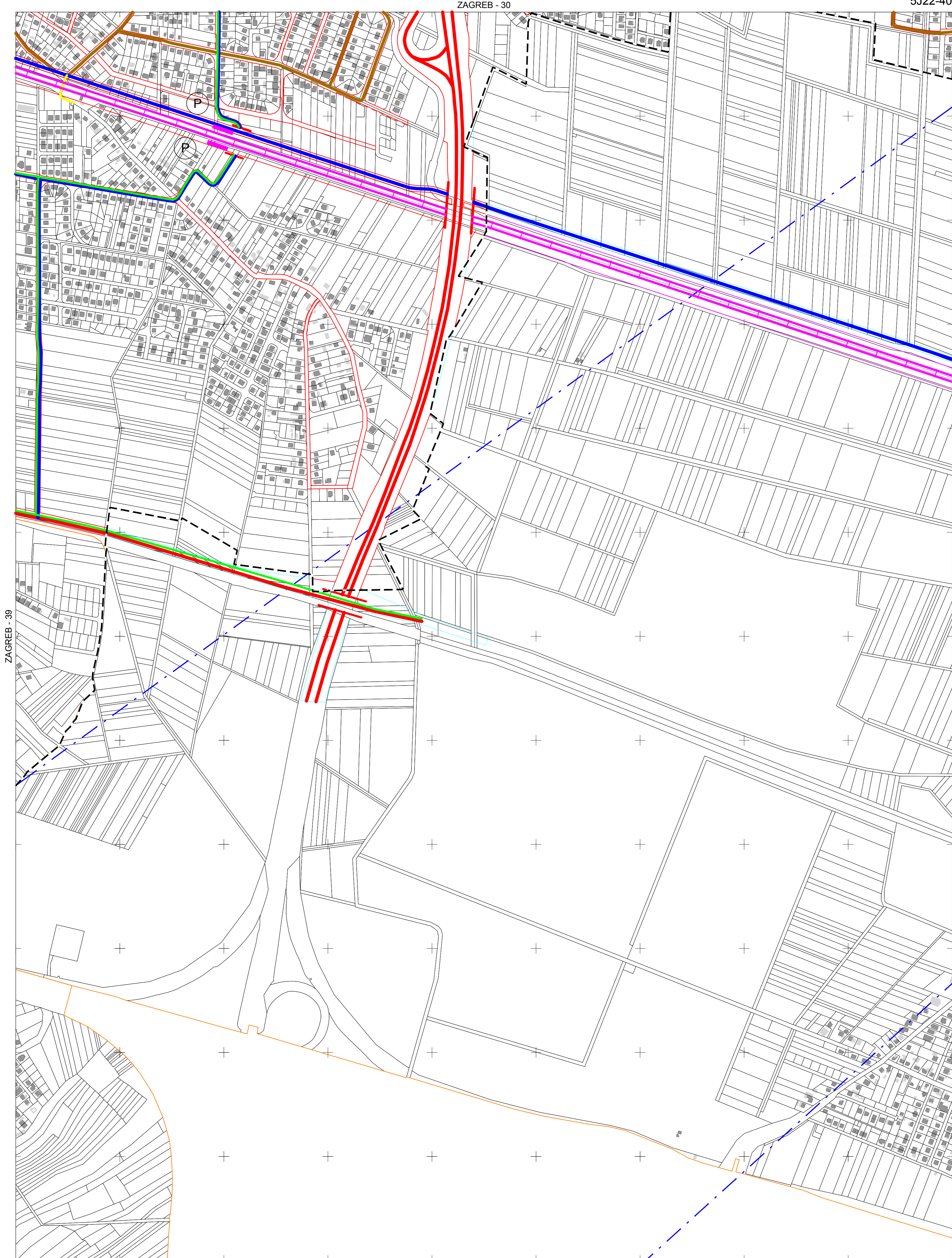
- A - tahimetrija, ortogonal
- B - fotogrametrija
- C - komasacija
- D - grafička



MJERILO 1:5000



ZAGREB - 30



ZAGREB - 39

DUGO SELO - 31

ZAGREB - 50

5  
073  
000

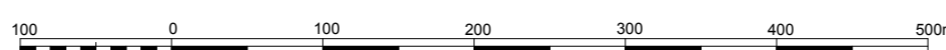
Izrada: Gradski ured za katastar i geodetske poslove Grada Zagreba  
prosinac 2013.

KATASTARSKE OPĆINE:

- A - Sesvetski Kraljevec
- B - Sesvete
- C - Resnik

IZMJERA:

- A - tahimetrija, ortogonal
- B - fotogrametrija
- C - komasacija
- D - grafička



MJERILO 1:5000

